



BACKCOUNTRY
DISCOVERY
ROUTES

RideBDR.com



ButlerMaps.com

BITE-SIZE BDR #3: MABR SECTIONS 7, 8 & 9 Northern Pennsylvania Loop

Introducing Bite-Size Butler BDR maps brought to you by ADVmoto. A collection of the most primo slices of BDR.

Download free GPS tracks, access travel resources, and purchase any of the ten BDR route maps or documentary films at RideBDR.com.

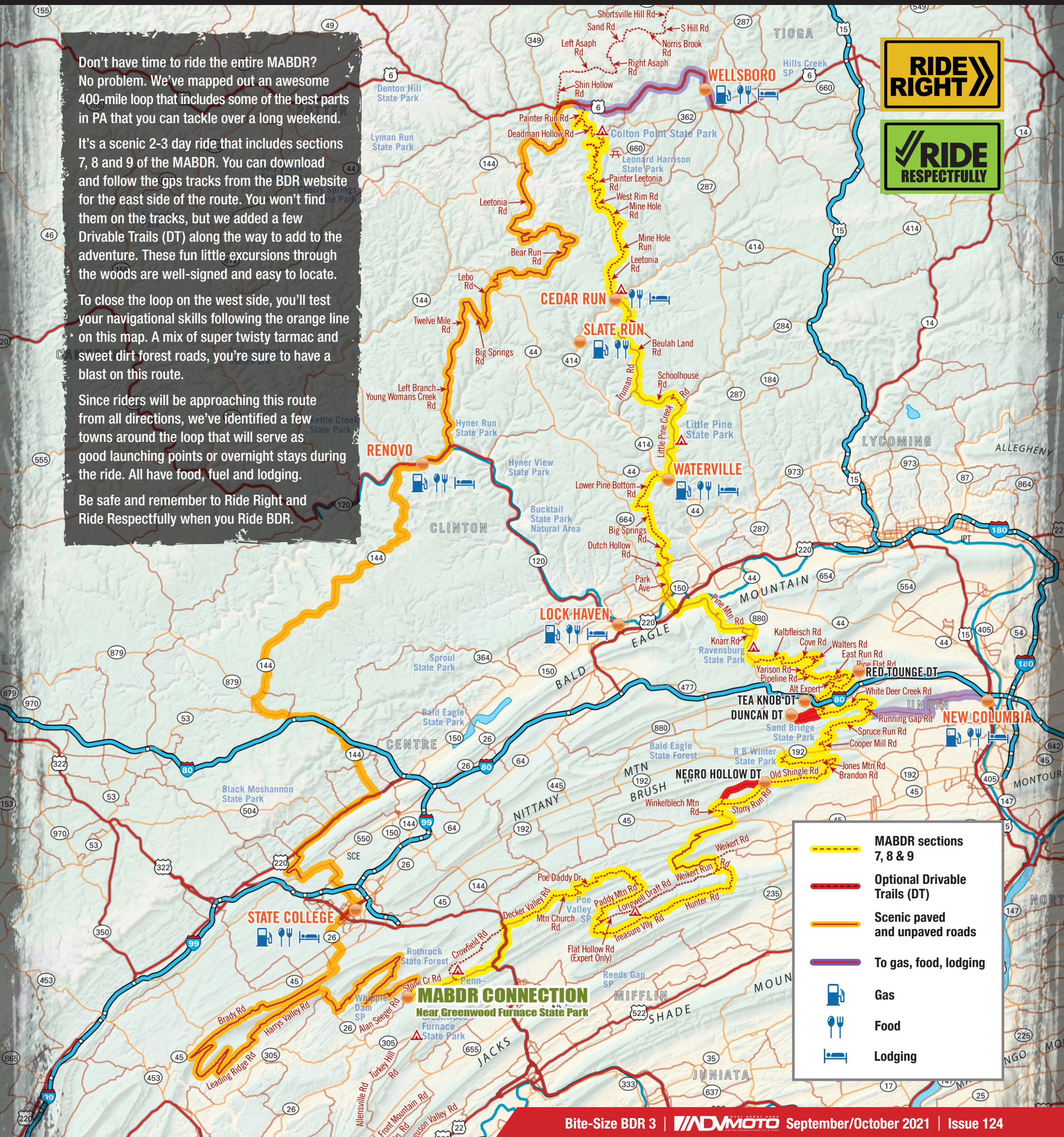
Don't have time to ride the entire MABDR? No problem. We've mapped out an awesome 400-mile loop that includes some of the best parts in PA that you can tackle over a long weekend.

It's a scenic 2-3 day ride that includes sections 7, 8 and 9 of the MABDR. You can download and follow the gps tracks from the BDR website for the east side of the route. You won't find them on the tracks, but we added a few Drivable Trails (DT) along the way to add to the adventure. These fun little excursions through the woods are well-signed and easy to locate.

To close the loop on the west side, you'll test your navigational skills following the orange line on this map. A mix of super twisty tarmac and sweet dirt forest roads, you're sure to have a blast on this route.

Since riders will be approaching this route from all directions, we've identified a few towns around the loop that will serve as good launching points or overnight stays during the ride. All have food, fuel and lodging.

Be safe and remember to Ride Right and Ride Respectfully when you Ride BDR.



- MABDR sections 7, 8 & 9
- Optional Drivable Trails (DT)
- Scenic paved and unpaved roads
- To gas, food, lodging
- Gas
- Food
- Lodging

© 2021 Backcountry Discovery Routes. All rights reserved. Backcountry Discovery Routes and BDR are registered trademarks. Backcountry Discovery Routes is a 501c(3) non-profit organization. Map Copyright 2021 by Butler Maps, Inc., Eagle, Colorado - All Rights Reserved. This product is protected under General Copyright Laws, and it is illegal to reproduce, republish or disseminate, in whole or in part, without the expressed written permission of Butler Maps, Inc. The Butler Maps logo, tradename and G Shields are the exclusive and registered trademarks of Butler Maps, Inc. US Patent #12/460,971 on the map design, concept and layout.